



# Datasheet

## Taxiway Edge Light (241)

## General

TKH Airport Solutions elevated lights are efficient LED lights that meet the highest requirements in design and development. The use of shatter-proof and scratch resistant glass and the high temperature resistance range guarantee a lifetime of 20 years. The risk of damage is greatly reduced and therefore a significant reduction in maintenance costs and material consumption can be achieved. Shape, size and weight have a positive impact on the wind load and in addition, the lights offer a high-resistance to the plane's jet wash and provide ideal illumination even under difficult conditions.

## Key features

- Power consumption: 8 W
- Rated Voltage: max. 1,7 VAC
- No adjustment of the light fitting
- Aviation color lenses used with colored LEDs
- Useful lamp life (LED) up to 50,000 h
- Available with FAA-L823 cable plug
- Fully corrosion-proof components
- Finished in aviation yellow
- Weight: 1.4 KG
- Ambient temperature: -40 °C (-40 °F) / + 75 °C (+167 °F)
- Suitable for use with a daylight marker cone
- Dust and water tightness: IP54
- Nominal AC frequency: 40-70 Hz

## Standards

This fixture has been developed according to the following standards:

- ICAO Annex 14, Vol. 1 and Vol. 2
- FAA AC 150/5345-46E
- Engineering Brief No. 67D
- IEC TS 61827

## Variants

- Total height 260mm
- Total height 350mm

## Colours

- blue

## Light distributions

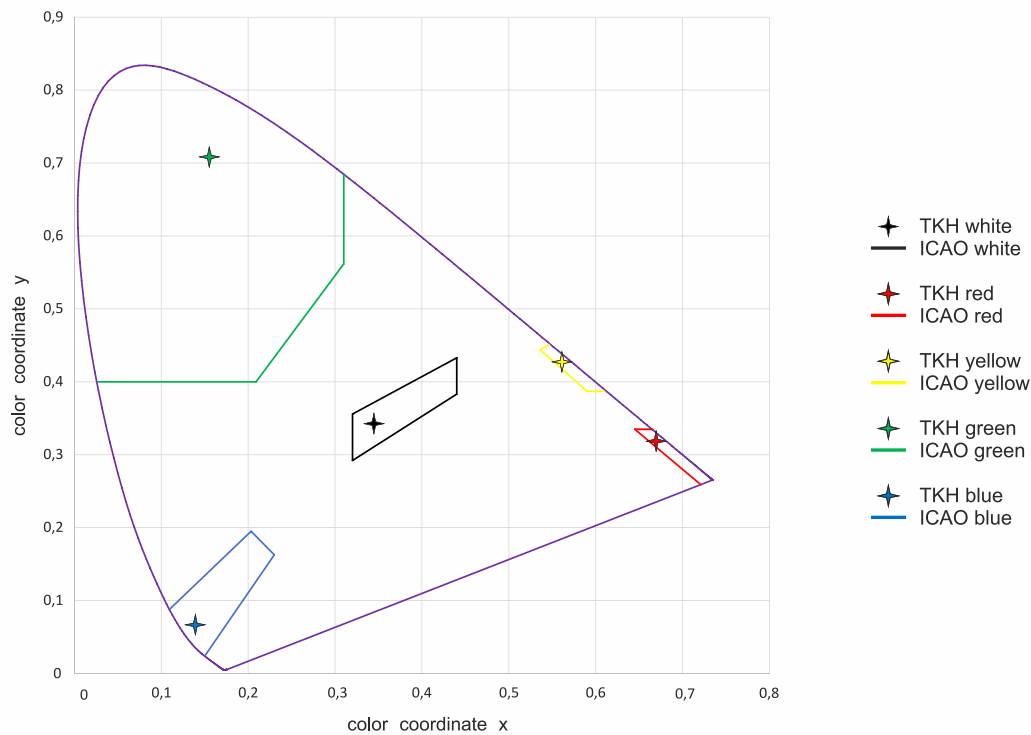
### Blue, Taxiway Edge Elevated Light

#### ICAO §5.3.18

ICAO	TKH
min. (cd)	
2.0	2.0
0.2	1.0

## Chromaticities

Areas description according to ICAO Annex 14, Volume I, Edition 8, July 2018



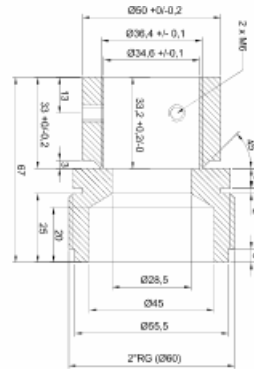
## Couplings

TKH elevated light fixtures can be delivered with different types of breakable coupling:

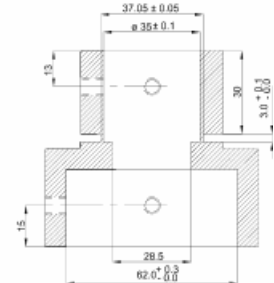
- **Type A:** With 2" thread (European standard thread or 11.5 NPT or NPS)
- **Type C:** For 2" pole mounting
- Customer designed couplings

TKH breakable coupling is calculated and tested to break at

45 kgm ± 4 kgm which is in accordance with FAA AC 150/5345-46E and ICAO Annex 14, Vol. 1.

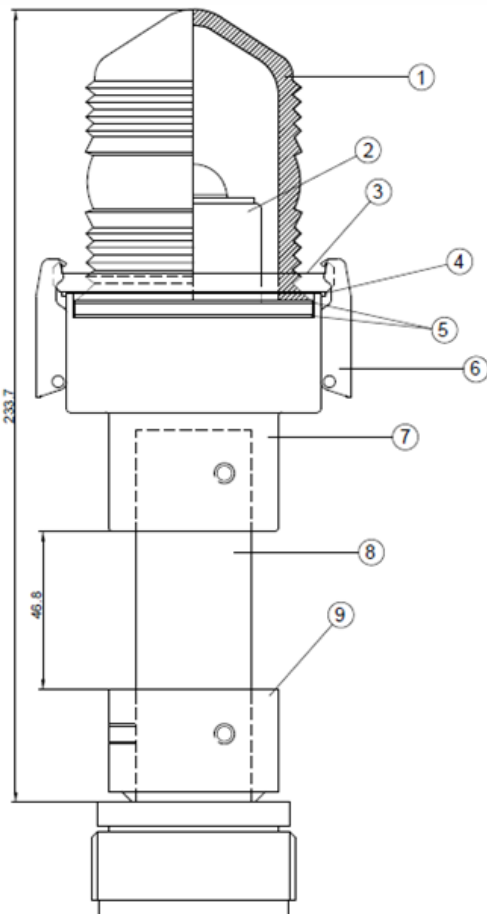


Type A



Type C

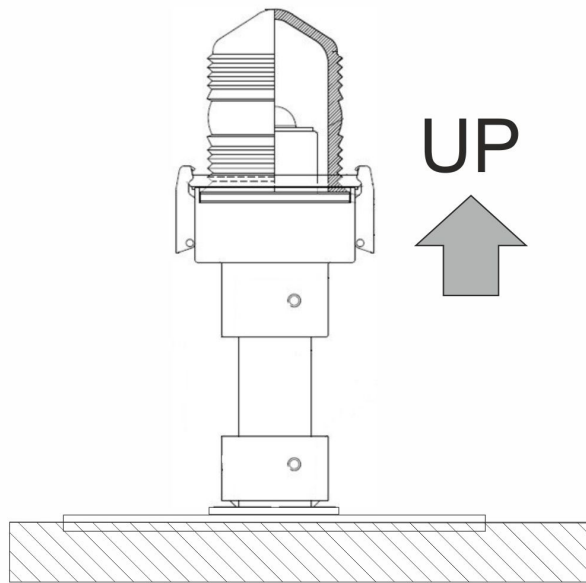
## Dimensions



1. Lens, blue glass
2. Light unit
3. Top ring
4. Neoprene seal
5. Rubber seal
6. Steel clamp
7. Lamp housing (aluminum)
8. Transformer tube
9. Breakable coupling (aluminum)

## Operation position

The Elevated Taxiway Edge Light 241 is for outdoor use only. The operation position must be according the drawing (note: drawing is indicative only).



## Accessories

- Transformer
- Breakable coupling (unless included)
- Base plate

Please contact our sales team to know which accessories are required for your application.

## Ordering Code

Ordering Code	Description
241.LED-B.B.4.A-6,6A	Taxiway Edge   Omni   Elevated   Blue   6.6A   1 x 400mm FAA cable   Height: 260mm   No fail-open   241-Family   LED   Coupling type A
241.LED-B.B.4.C-6,6A	Taxiway Edge   Omni   Elevated   Blue   6.6A   1 x 400mm FAA cable   Height: 260mm   No fail-open   241-Family   LED   Coupling type C
241.LED-B.L.4.A-6,6A	Taxiway Edge   Omni   Elevated   Blue   6.6A   1 x 400mm FAA cable   Height: 350mm   No fail-open   241-Family   LED   Coupling type A
241.LED-B.L.4.C-6,6A	Taxiway Edge   Omni   Elevated   Blue   6.6A   1 x 400mm FAA cable   Height: 350mm   No fail-open   241-Family   LED   Coupling type C

## Document Information

Name : 04\_LED\_Taxiway\_Edge\_Light\_Type\_241\_03-71044

Version : V2.3

Language : English (Original manual)



For the latest version of this document see <https://www.tkh-airportsolutions.com/airfield-products/> or scan



### Company profile:

TKH Airport Solutions offers a complete range of LED-based airfield ground lighting products that are designed to be easy to install, operate, and maintain, and are compliant with international aviation standards. Our products meet the needs of our customers and contribute to a better future for the aviation industry. Being part of the TKH Group, our company can build on a history of more than 90 years in smart connectivity, energy distribution and AGL.

#### More information:

TKH Airport Solutions  
sales@tkh-airportsolutions.com  
www.tkh-airportsolutions.com  
+31 (0)53 57 414 56

#### Visiting address:

Elektrostraat 17  
7483 PG Haaksbergen  
The Netherlands