



Datasheet

Elevated Threshold Light (792 THR)

General

TKH Airport Solutions elevated lights are efficient LED lights that meet the highest requirements in design and development. The use of shatter-proof and scratch-resistant glass and the high temperature resistance range guarantee a lifetime of 20 years. The risk of damage is greatly reduced and therefore a significant reduction in maintenance costs and material consumption can be achieved. Shape, size and weight have a positive impact on the wind load and in addition, the lights offer a high resistance to the plane's jet wash and provide ideal illumination even under difficult conditions. Most of the elevated lights are also available in CEDD® AGL technology. Contact our team for more information.

Key features

- Power consumption: 28W (Rated voltage: max. 8.0 VAC)
- Ambient temperature: -40 °C (-40 °F) / +75 °C (+167 °F)
- Easy levelling and adjustment due to the patented ball joint
- The shape, the small size and light weight (3kg – 6lb) are favourable features in respect to wind load and jet blast
- Flexible mast adaptation for various diameters of poles
- Mounting on tube, pole or base plates
- Fully corrosion proof components are used
- Finished in aviation yellow
- Dust and water tightness: IP54
- Nominal AC Frequency: 40-70 Hz
- Front glass according to FAA spec. CAA-1199a.
- The outside surface of the glass is smooth and needs no cleaning.
- No adjustment necessary after relamping

Standards

This fixture has been developed according to the following standards:

- ICAO Annex 14, Vol. 1 and Vol. 2
- Engineering Brief No. 67D
- FAA AC 150/5345-46E
- IEC TS 61827

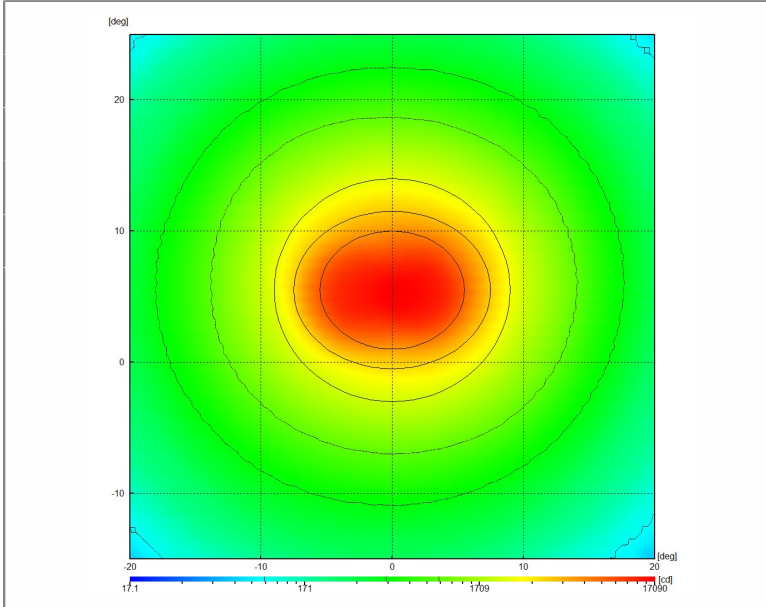
Colours

- Green

Light distributions

Green, Elevated Threshold Light

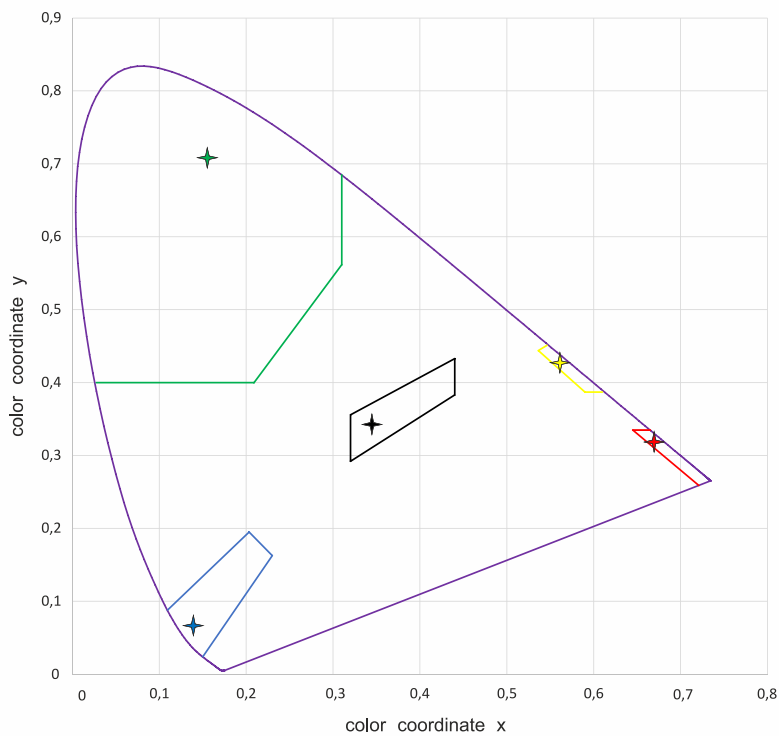
ICAO A2-3



ICAO	TKH
min. average (cd)	
10000	12335
min. (cd)	
5000	5850
1000	3916
500	2707

Chromaticities

Areas description according to ICAO Annex 14, Volume I, Edition 8, July 2018



- ✦ TKH white
- ICAO white
- ✦ TKH red
- ICAO red
- ✦ TKH yellow
- ICAO yellow
- ✦ TKH green
- ICAO green
- ✦ TKH blue
- ICAO blue

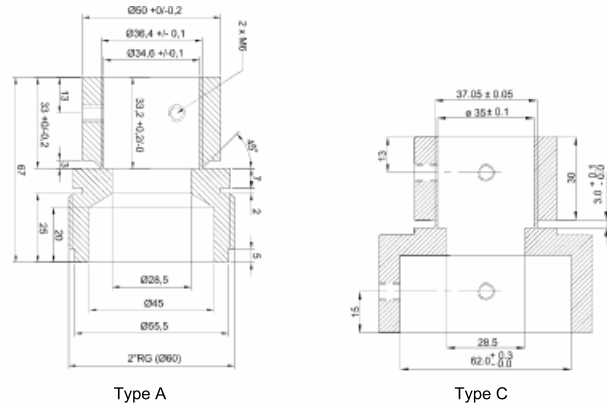
Couplings

TKH elevated light fixtures can be delivered with different types of breakable coupling:

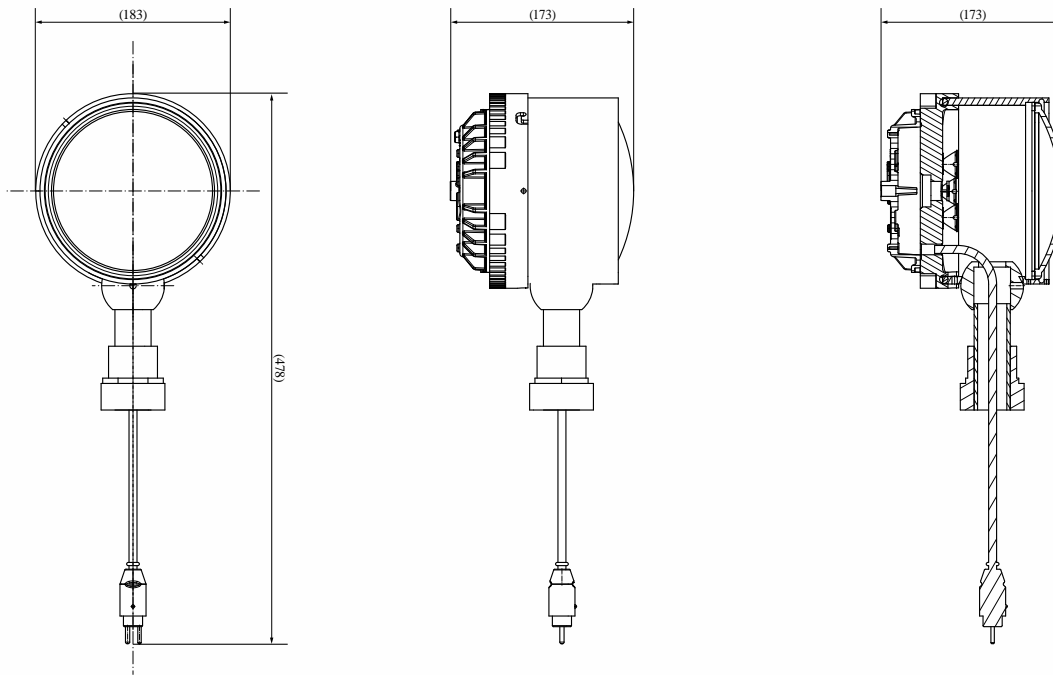
- **Type A:** With 2" thread (European standard thread or 11.5 NPT or NPS)
- **Type C:** For 2" pole mounting
- Customer designed couplings

TKH breakable coupling is calculated and tested to break at

45 kgm ± 4 kgm which is in accordance with FAA AC 150/5345-46E and ICAO Annex 14, Vol. 1.

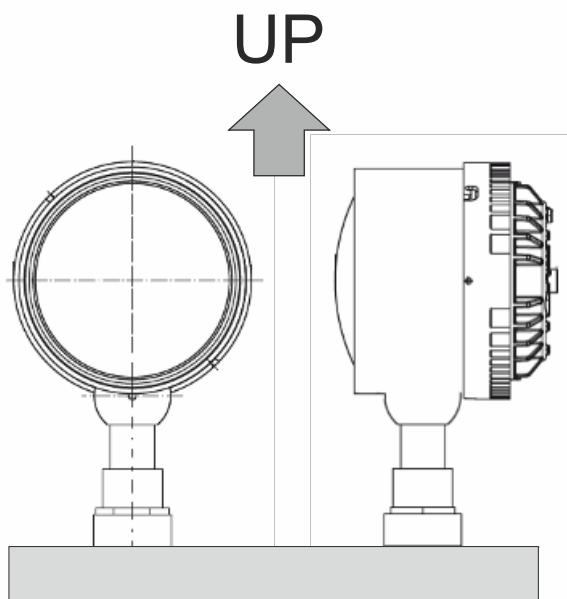


Dimensions



Operation position

The Elevated 792 fixture is for outdoor use only. The operation position must be according the drawing (note: drawing is indicative only).



Accessories

- Transformer
- Breakable coupling (unless included)
- Base plate
- Adjustment tool

Please contact our sales team to know which accessories are required for your application.

Document Information

Name : 04_LED_Threshold_Light_Type_792_03-71034

Version : V2.0

Language : English (Original manual)



For the latest version of this document see <https://www.tkh-airportsolutions.com/airfield-products/> or scan

Ordering code

Option	Key	Description	THR	S	I	3	4	G	00	0	00	-	3	-	40	-	1	0	1	0	-	792	-	LED	-	A
Version	THR	Threshold Light																								
Direction	S	Straight																								
Regulation	I	ICAO																								
Light Intensity	1	CAT I																								
	2	CAT II																								
	3	CAT III																								
Cover/Size	4	Elevated																								
Color A	G	Green																								
Toe-in A	00	No Toe-In																								
Color B	0	Blank																								
Toe-in B	00	No Toe-In																								
Prism	3	Glass for elevated Lights																								
Cable	40	400mm One Plug																								
Plug type	1	Standard FAA 2-Pole-Plug																								
Fail-open	0	Without Fail-Open																								
	1	With Fail-Open Hardware Relais																								
	2	With Fail-Open Signal Interface																								
Deicing-Kit	0	Without De-icing																								
Special options	0	No Special Options																								
	1	temperature compensation																								
Family	792	Unidirectional Elevated																								
Light Source	LED	LED																								
Coupling	A	Coupling A																								
	C	Coupling C																								
	T	One tube, No coupling																								



Company profile:

TKH Airport Solutions offers a complete range of LED-based airfield ground lighting products that are designed to be easy to install, operate, and maintain, and are compliant with international aviation standards. Our products meet the needs of our customers and contribute to a better future for the aviation industry. Being part of the TKH Group, our company can build on a history of more than 90 years in smart connectivity, energy distribution and AGL.

More information:

TKH Airport Solutions
sales@tkh-airportsolutions.com
www.tkh-airportsolutions.com
+31 (0)53 57 414 56

Visiting address:

Elektrostraat 17
7483 PG Haaksbergen
The Netherlands