



Datasheet

High Intensity Runway Edge Light (HIRE)

General

TKH Airport Solutions elevated lights are efficient LED lights that meet the highest requirements in design and development. The use of shatter-proof and scratch-resistant glass and the high temperature resistance range guarantee a lifetime of 20 years. The risk of damage is greatly reduced and therefore a significant reduction in maintenance costs and material consumption can be achieved. Shape, size and weight have a positive impact on the wind load and in addition, the lights offer a high resistance to the plane's jet wash and provide ideal illumination even under difficult conditions. Most of the elevated lights are also available in CEDD® AGL technology. Contact our team for more information.

Key features

- Power consumption per side: 28 W (white), 24 W (yellow), 18 W (red)
- Max. rated voltages: 3.5 - 7.7 VAC
- Nominal AC frequency: 40-70 Hz
- Ambient temperature: -40 °C (-40 °F) / + 75 °C (+167 °F)
- Easy levelling and adjustment due to the patented ball joint
- The shape, the small size and low weight are favorable features in respect to wind load and blast
- Mounting on tube, pole or base plates
- Fully corrosion-proof components are used
- Finished in aviation yellow
- Dust and water tightness: IP68
- Front glass according to FAA spec. CAA-1199a.
- No adjustment necessary after relamping
- Heat resistant lens system, providing main beam and additional omnidirectional light
- Average lifetime of up to 50,000 hours
- Suitable for use with a daylight marker cone

Standards

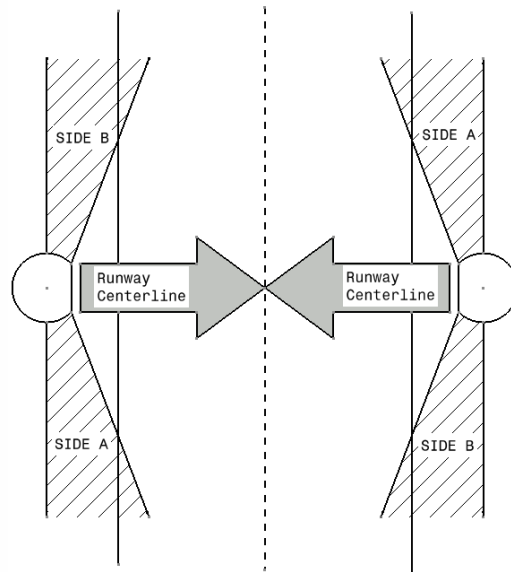
This fixture has been developed according to the following standards:

- ICAO Annex 14, Vol. 1 and Vol. 2
- Engineering Brief No. 67D
- FAA AC 150/5345-46E
- IEC TS 61827

Colors

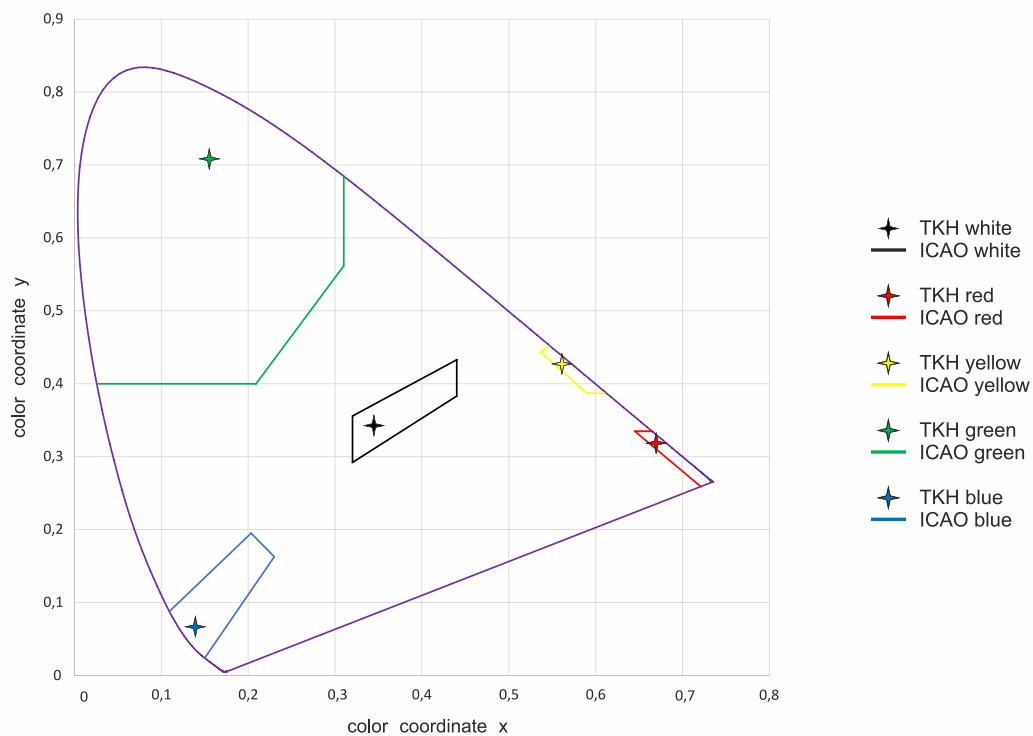
- White
- Yellow
- Red

Use the drawing to define the right color configuration per fixture.



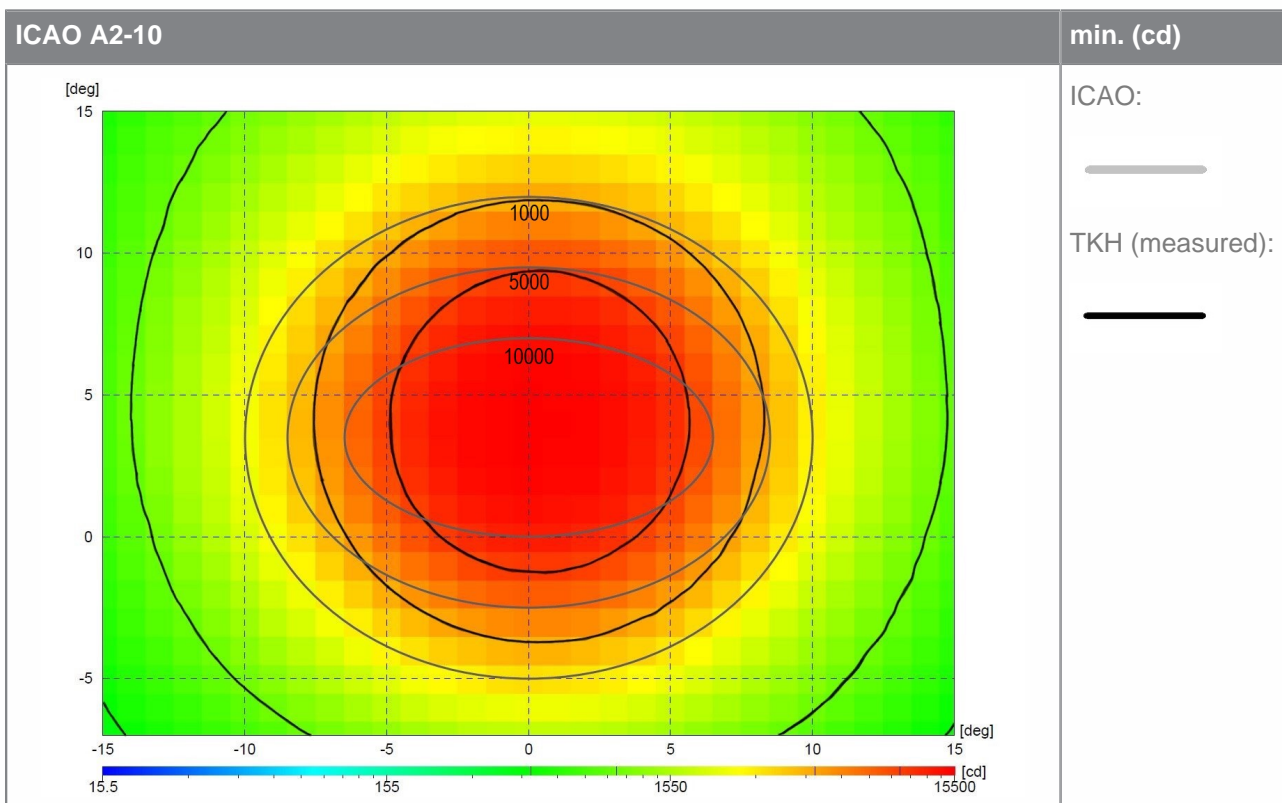
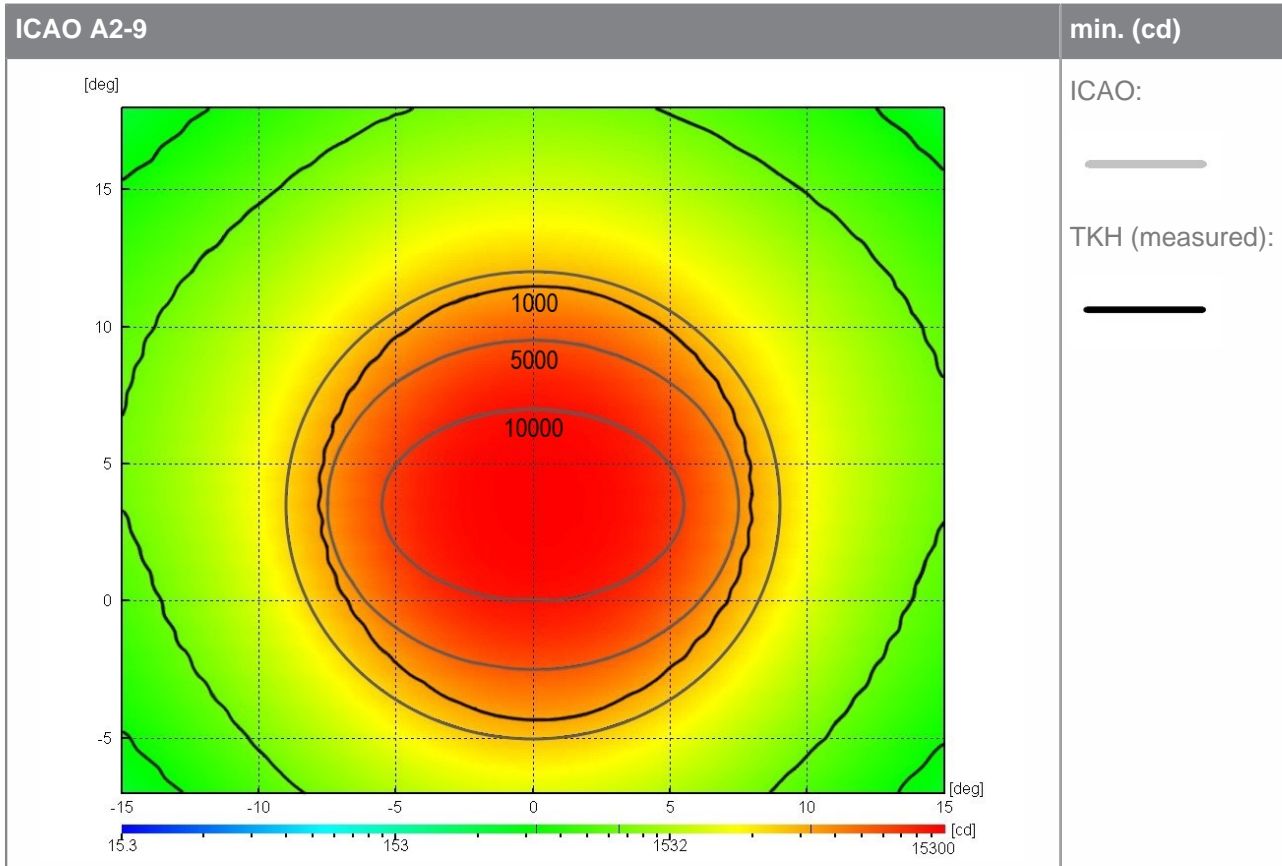
Chromaticities

Areas description according to ICAO Annex 14, Volume I, Edition 8, July 2018



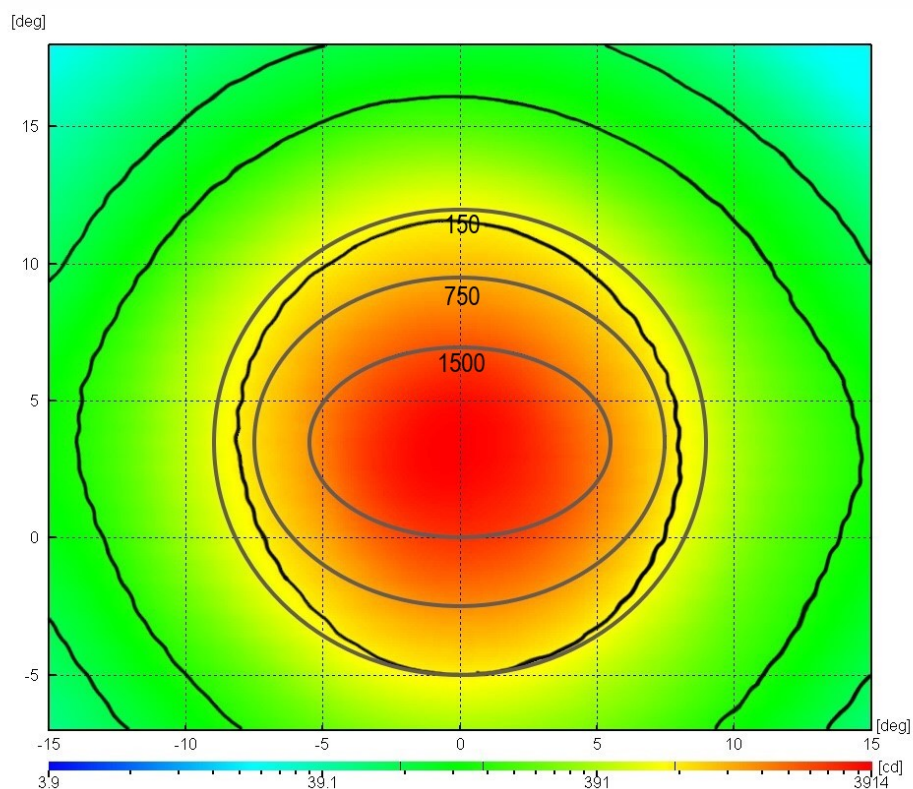
Light Distributions

High Intensity Runway Edge (HIRE) - White



High Intensity Runway Edge (HIRE) - Red

ICAO A2-9

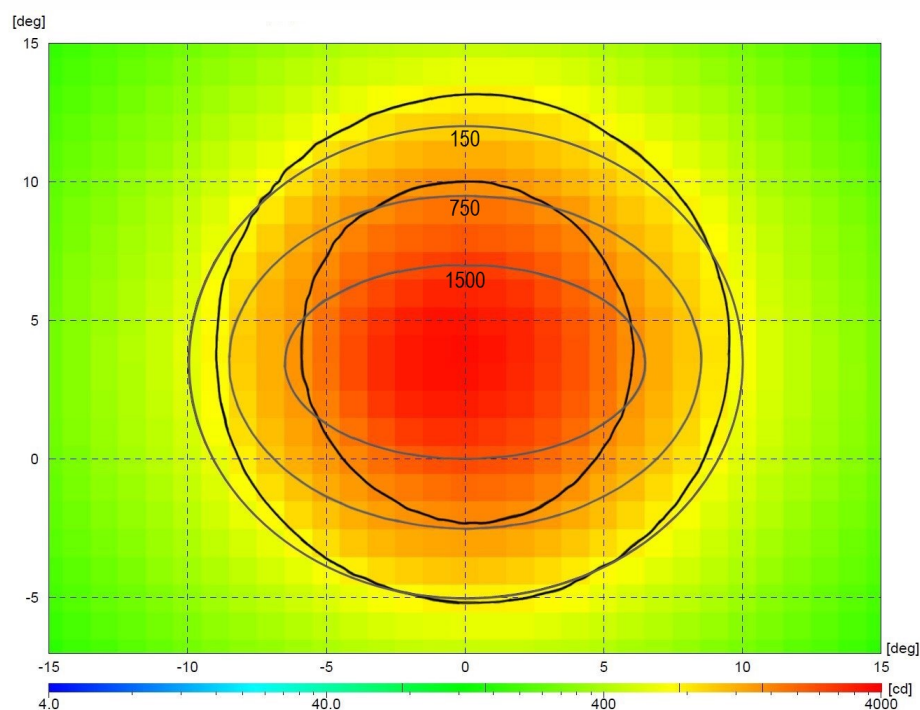


min. (cd)

ICAO:

TKH (measured):

ICAO A2-10



min. (cd)

ICAO:

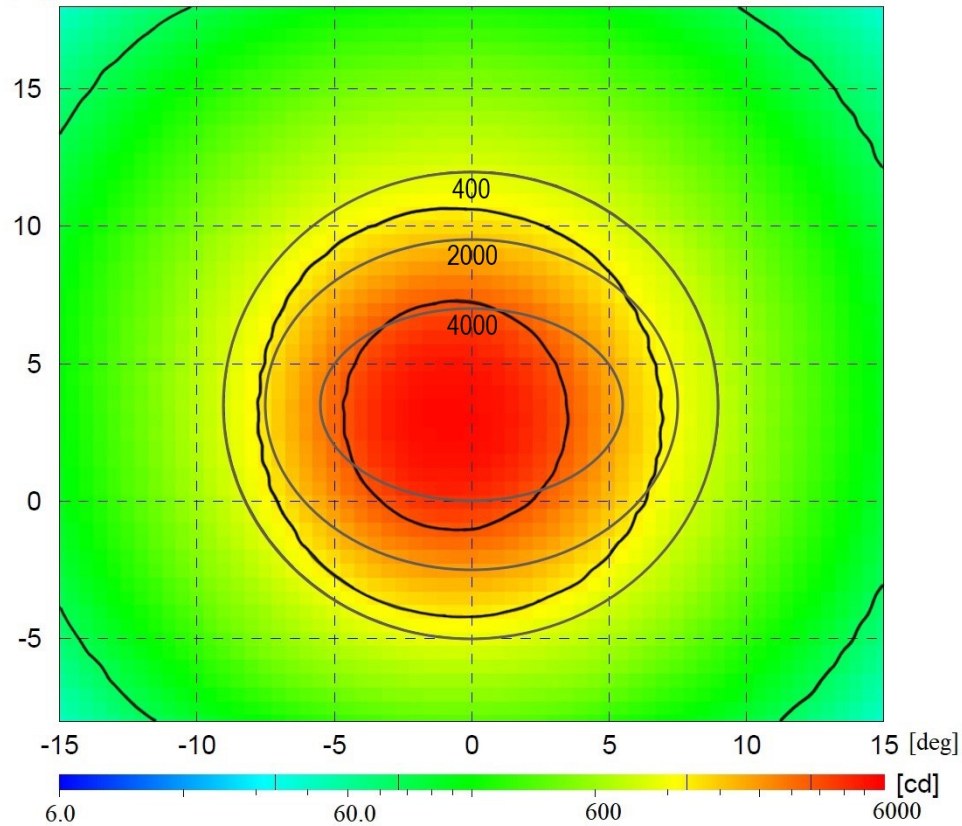
TKH (measured):

High Intensity Runway Edge (HIRE) - Yellow

ICAO A2-9

min. (cd)

[deg]



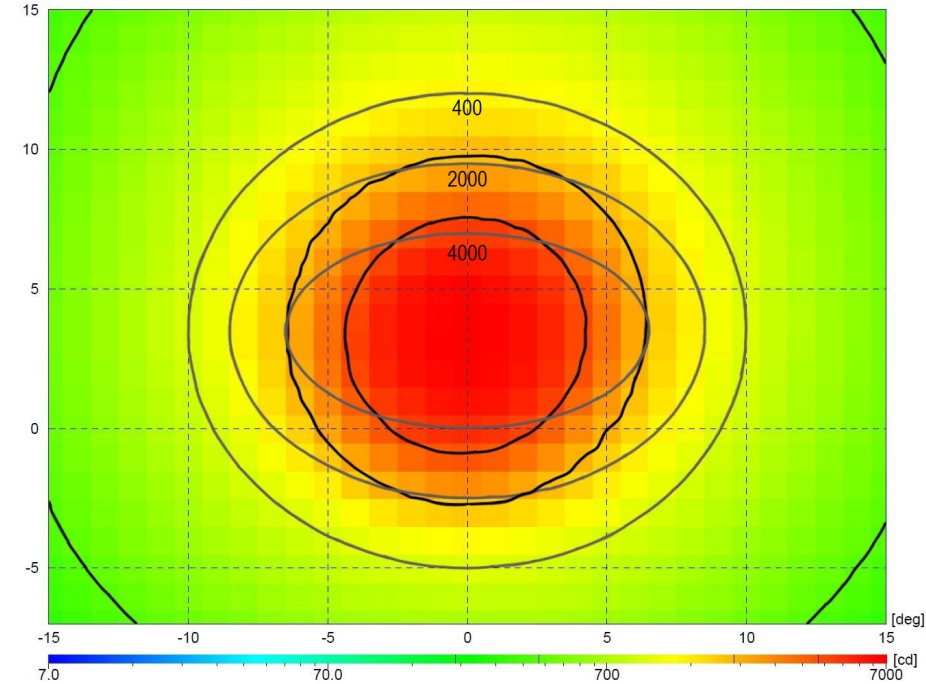
ICAO:

TKH (measured):

ICAO A2-10

min. (cd)

[deg]



ICAO:

TKH (measured):

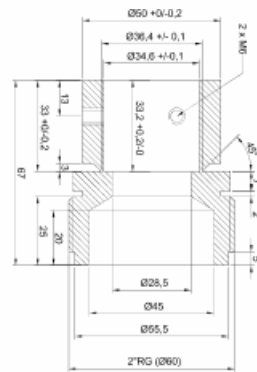
Couplings

TKH elevated light fixtures can be delivered with different types of breakable coupling:

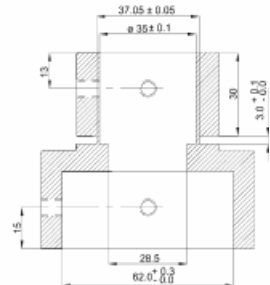
- **Type A:** With 2" thread (European standard thread or 11.5 NPT or NPS)
- **Type C:** For 2" pole mounting
- Customer designed couplings

TKH breakable coupling is calculated and tested to break at

45 kgm \pm 4 kgm which is in accordance with FAA AC 150/5345-46E and ICAO Annex 14, Vol. 1.

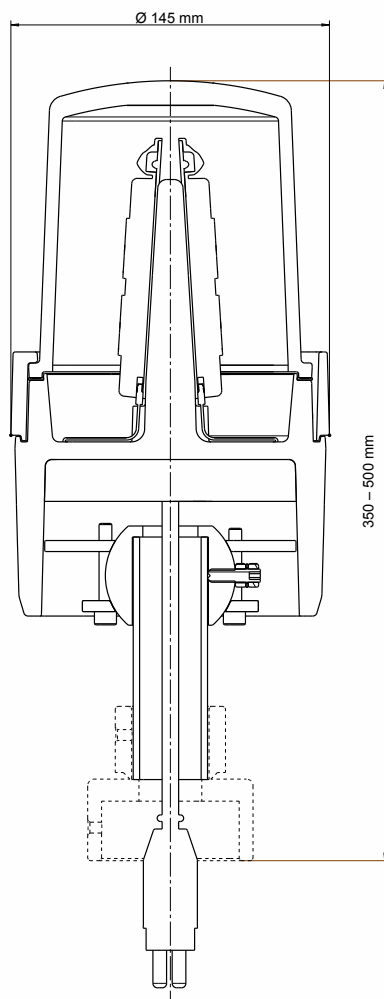


Type A



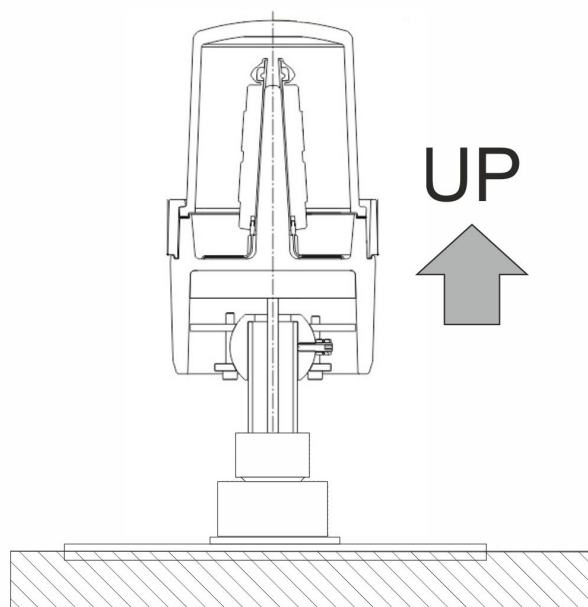
Type C

Dimensions



Operation position

The Runway Edge Light HIRE is for outdoor use only. The operation position must be according the drawing (note: drawing is indicative only).



Accessories

- Transformer
- Breakable coupling (unless included)
- Base plate
- Adjustment tool

Please contact our sales team to know which accessories are required for your application.

Packing data

Dimensions (L x W x H) in mm	Gross weight in kg	Net. weight in kg
170 x 170 x 385	4.1	3.9



Document Information

Name : 04_LED_High_Intensity_Runway_Edge_Light_Type_HIRE_03-71039

Version : V2.7

Language : English (Original manual)



For the latest version of this document see <https://www.tkh-airportsolutions.com/airfield-products/> or scan

Ordering code

Option	Key	Description	REH	-	S	-	I	-	3	4	-	W 40	W 40	-	3	-	50	-	1	0	0	-	HIRE	-	LED	-	A
Function	REH	Runway Edge High Intensity																									
Direction	S L R	Straight Left Right																									
Regulation	I	ICAO																									
Light Intensity	1 2 3	CAT I CAT II CAT III																									
Cover/Size	4	Elevated																									
Color A	R W Y B 0	Red White Yellow Blue Blank																									
Toe-in A	40	for 3,5° and 4,5° Toe-In																									
Color B	R W Y B 0	Red White Yellow Blue Blank																									
Toe-in B	40	for 3,5° and 4,5° Toe-In																									
Prism	3	Glass for Elevated Lights																									
Connection	50	110mm One Plug																									
Plug Type	1	Standard FAA 2-Pole-Plug																									
Fail-open	0 1 2	Without Fail-Open With Fail-Open Hardware Relais With Fail-Open Signal Interface																									
Heater	0	No Heater																									
Special Options	0	No Special Options																									
Family	HIRE	HI-Intensity REH Elevated																									
Light Source	LED	LED																									
Coupling	A C T	Coupling A Coupling C One Tube, No Coupling																									



Company profile:

TKH Airport Solutions offers a complete range of LED-based airfield ground lighting products that are designed to be easy to install, operate, and maintain, and are compliant with international aviation standards. Our products meet the needs of our customers and contribute to a better future for the aviation industry. Being part of the TKH Group, our company can build on a history of more than 90 years in smart connectivity, energy distribution and AGL.

More information:

TKH Airport Solutions
sales@tkh-airportsolutions.com
www.tkh-airportsolutions.com
+31 (0)53 57 414 56

Visiting address:

Elektrostraat 17
7483 PG Haaksbergen
The Netherlands