



Datasheet

PAPI Halogen (801)

General

The TKH Airport Solutions PAPI (Precision Approach Path Indicator) Systems fulfil the latest ICAO international standards and recommended 'Practices for Aerodromes – Annex 14, Vol. 1' and 'Aerodrome Design Manual part 4, Visual aids'. The basic systems can also be used for the sharp transition PAPI-system especially for short take-off and landing (STOLport) runways (AN / 899).

Key features

- Easily installed and adjusted
- The optical unit built like a cassette for easy cleaning
- Lamp change and maintenance without optical re-alignment
- No tool needed for relamping
- Non-corrosive cabinet of a reliable mechanical construction
- Two or three 200 W / 6.6 A halogen lamps, with an average lifetime of 1,000 hours at 100 %
- Each optical system can be adjusted separately
- The PAPI units can optionally be supplied with a heater system (power consumption 25 W per lamp)

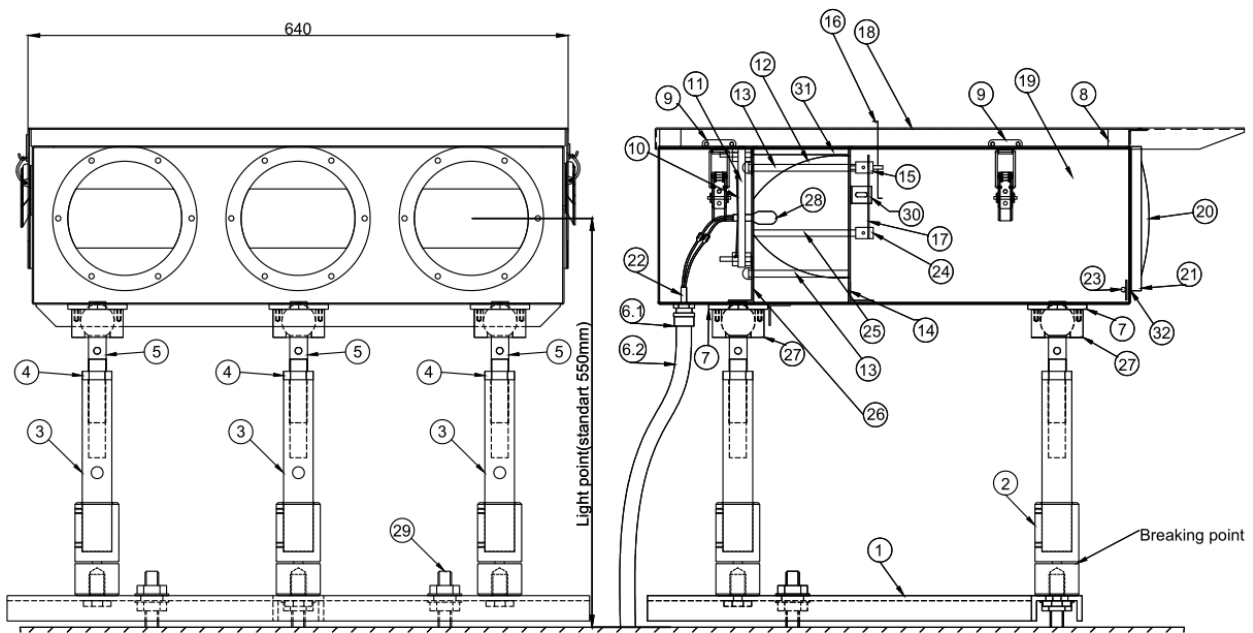
Variants

- 3 x 200W Halogen
- 2 x 200W Halogen
- Optional heater system

Light distributions

The TKH Airport Solutions PAPI (Precision Approach Path Indicator) fulfils the latest ICAO international standards and is tested according to the applicable standards. Test reports of the light distributions are available on request.

Technical Drawing



Accessories

- Foundation bolts
- Clinometer for PAPI
- Transformer

Packing data

Dimensions (L x W x H) in mm	Gross weight in kg	Net. weight in kg
700 x 700 x 370	40.5	37.5

Ordering Code

Ordering code	Material Code	Description	Halogen 3x200W	Halogen 2x200W	Heater system	Input connector
801.841	011.563-007	PAPI, 550 mm height, incl. base frame and breakable coupling	X		no	FAA - L823-0.4m FAA Cable
801.841 + 801.845	011.563-017	PAPI, 550 mm height, incl. base frame, breakable coupling and heater system	X		yes	FAA - L823-0.4m FAA Cable
801.821/1	011.563-027	PAPI, 550 mm height, incl. base frame and breakable coupling		X	no	FAA - L823-0.4m FAA Cable
801.821/1 + 801.845		PAPI, 550 mm height, incl. base frame, breakable coupling and heater system		X	yes	FAA - L823-0.4m FAA Cable
801.845	200.189-007	Heater system, 3 x 25 W-42 V			yes	

Document Information

Name : 04_Precision_Approach_Path_Indicator_System_Type_PAPI_03-71038

Version : V2.0

Language : English (Original manual)



For the latest version of this document see <https://www.tkh-airportsolutions.com/airfield-products/> or scan



Company profile:

TKH Airport Solutions offers a complete range of LED-based airfield ground lighting products that are designed to be easy to install, operate, and maintain, and are compliant with international aviation standards. Our products meet the needs of our customers and contribute to a better future for the aviation industry. Being part of the TKH Group, our company can build on a history of more than 90 years in smart connectivity, energy distribution and AGL.

More information:

TKH Airport Solutions
sales@tkh-airportsolutions.com
www.tkh-airportsolutions.com
+31 (0)53 57 414 56

Visiting address:

Elektrostraat 17
7483 PG Haaksbergen
The Netherlands