



TKH
AIRPORT
SOLUTIONS



Datasheet

CEDD® Omnidirectional Inset Light

CEDD® AGL
Airfield Ground Lighting

03-70060
V1.2

General

CEDD® is a smart, safe and sustainable airfield ground lighting technology. Energy and data transport are combined in a single cable. CEDD® airfield lights receive their power and data by means of induction and can therefore easily and safely be installed or replaced without making electrical contact.

With up to 40% lower energy consumption compared to regular LED AGL systems, CEDD® enables airfields to reduce their impact on the environment. Also, the robust design of the infrastructure is highly suitable for floating 'Follow-the-Greens'. CEDD® AGL provides a solution to face the most challenging future operational demands.

Most of the TKH Airport Solutions inset fixtures are available for regular 6.6-A LED AGL as well as for CEDD® AGL installations. This datasheet covers the specifications of the CEDD® Omnidirectional Inset Light.

Key features

- 8" outer diameter
- Dust and water resistance: IP68
- Useful lamp life (LED) up to 50,000 hours
- Certification: ICAO
- Power consumption (CEDD® regulated): 7 W (Y); 6 W (R); 11 W (W); 5 W (B)
- Ambient temperature: -40 °C (-40 °F) / + 75 °C (+167 °F)
- Internal serial interface for diagnostics and parameterization
- Integrated single lamp control
- Intensity control: 0-100%

Photometric data in this datasheet (such as light distributions and chromaticities) is based on ICAO certification. FAA data, if applicable, is available upon request. Contact our sales team for more information.

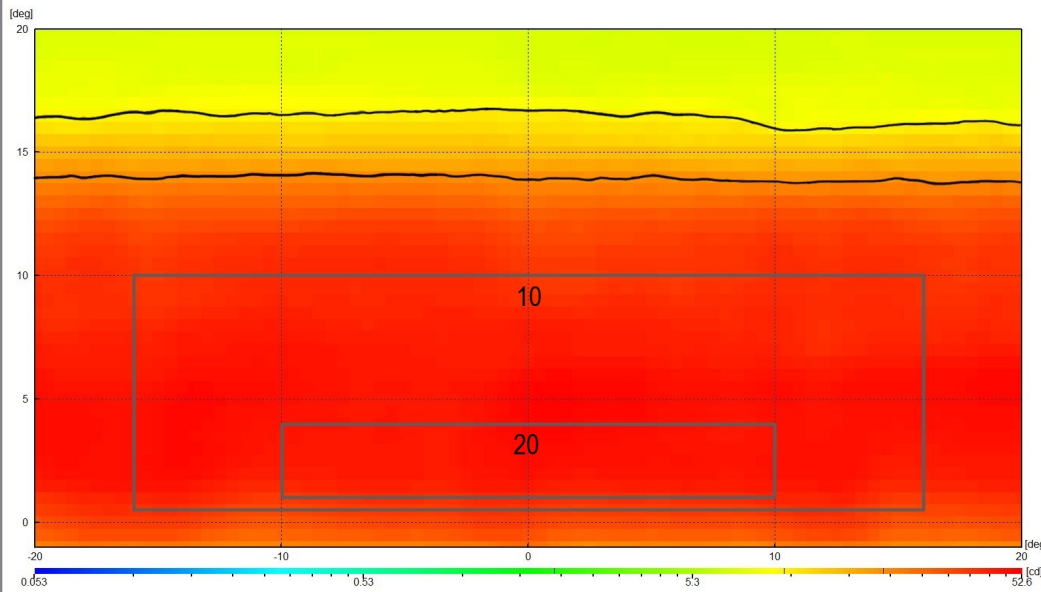
Colors

- Red
- White
- Yellow
- Blue

Light distributions

Yellow

ICAO A2-15



min. (cd)

ICAO:

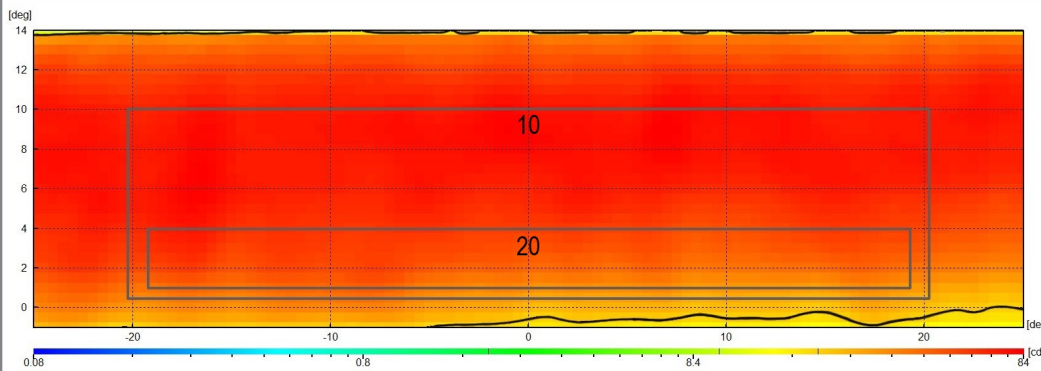


TKH (measured):



Red

ICAO A2-16



min. (cd)

ICAO:

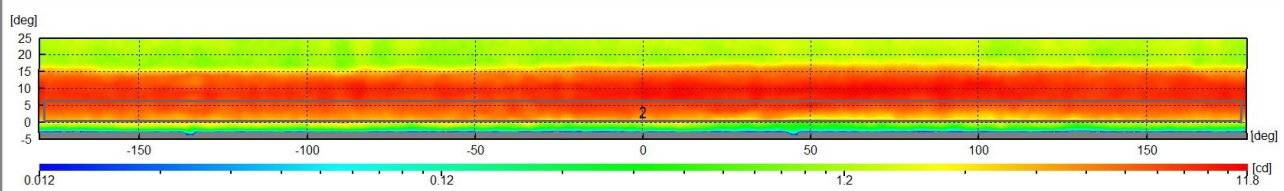


TKH (measured):



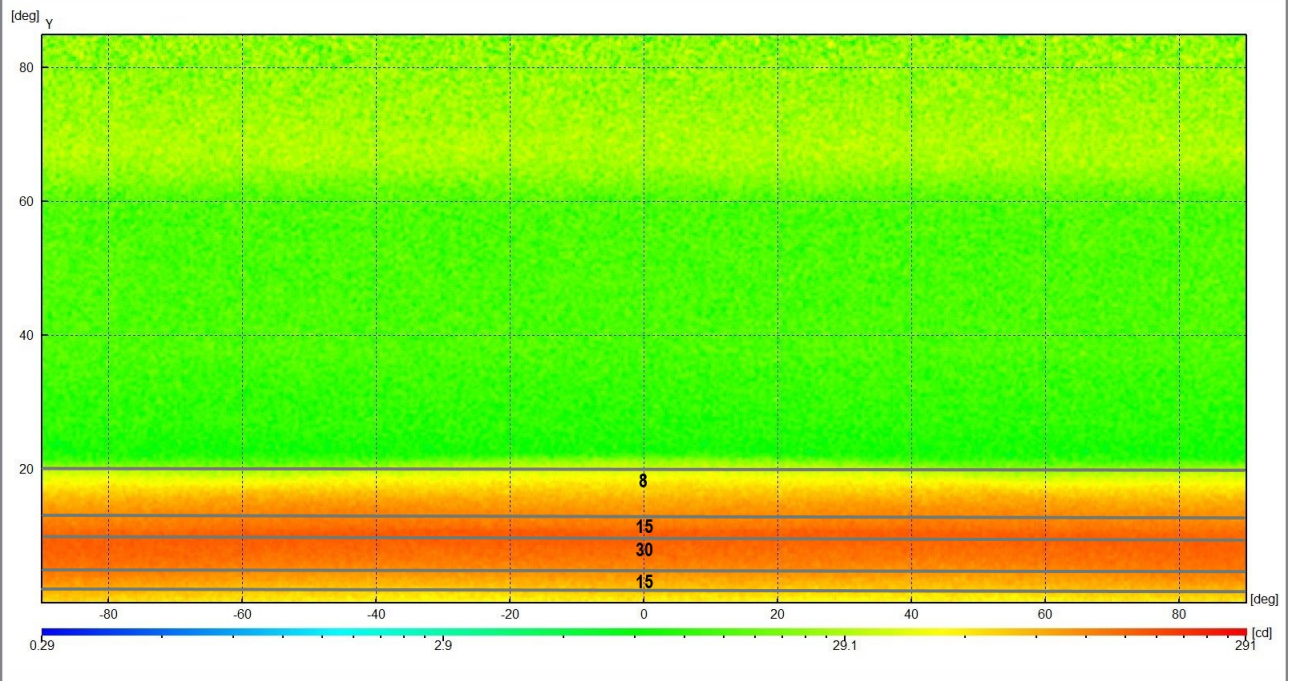
Blue

ICAO §5.3.18



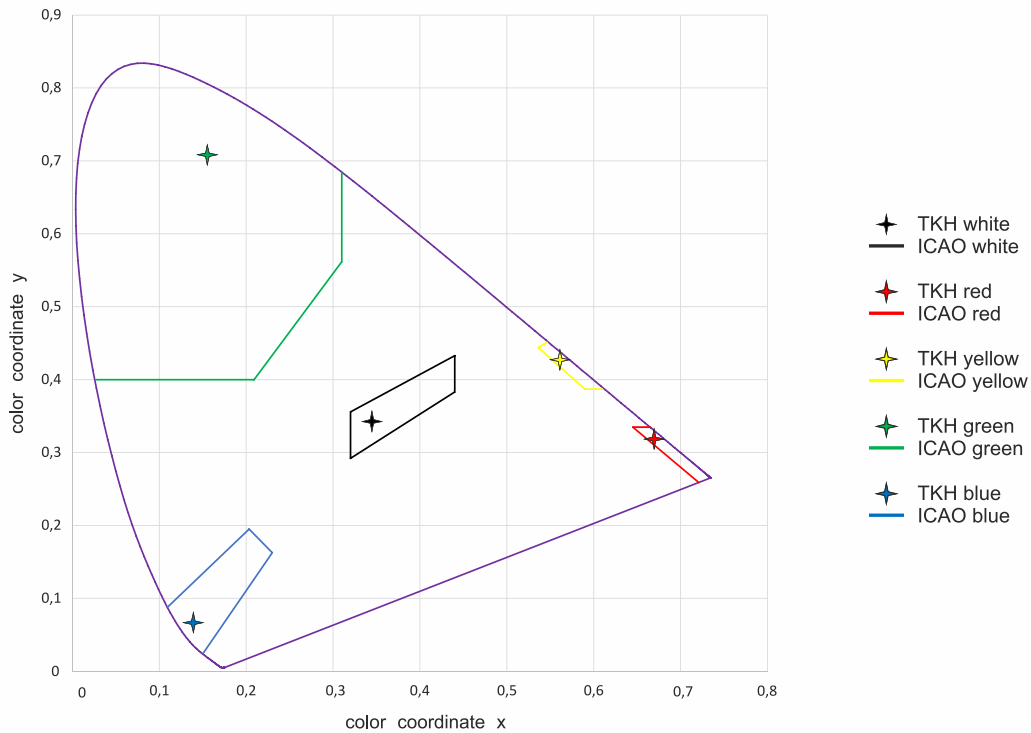
White

ICAO Vol.2, Fig. 5-12, Illustration 5



Chromaticities

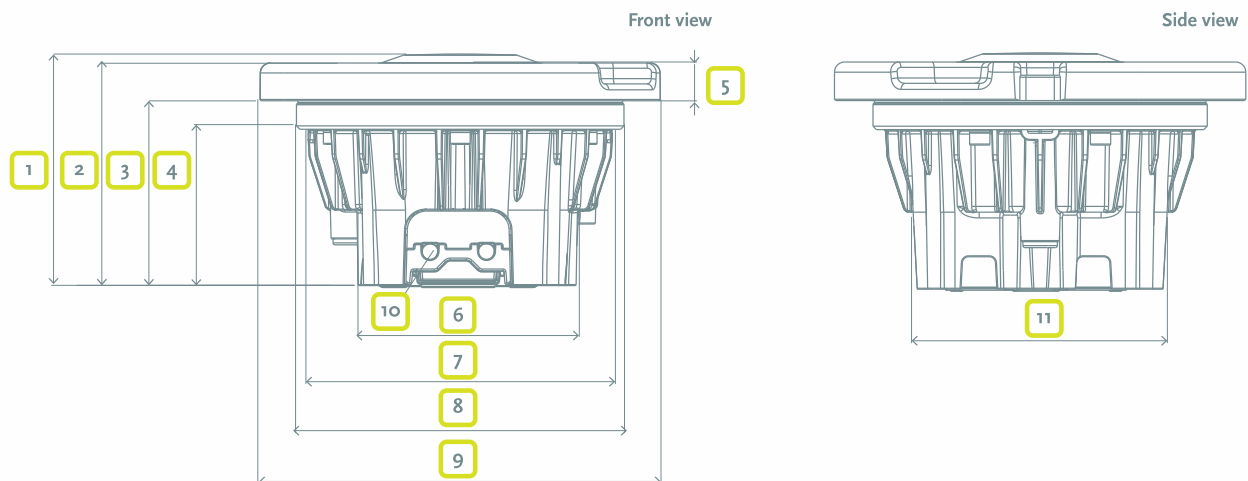
Areas description according to ICAO Annex 14, Volume I, Edition 8, July 2018



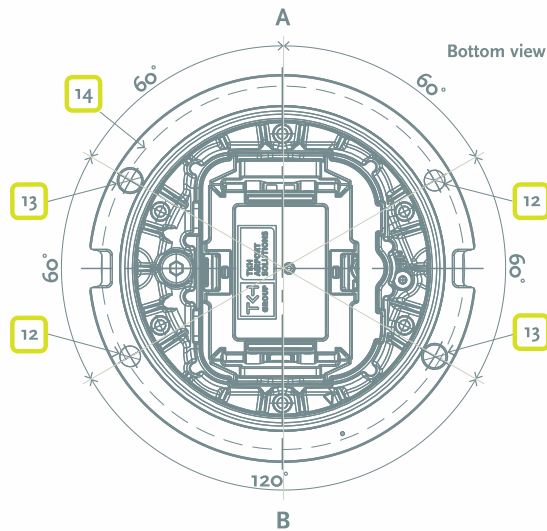
Dimensions

8" fixture (omnidirectional)

Pos.	Description	Values
1	Total height	116.6 mm
2	Height LED engine	112 mm
3	Height with flange	93 mm
4	Height below flange	78.7 mm
5	Flange thickness	19 mm
6	Housing bottom width	111 mm
7	Housing top diameter	153.5 mm
8	Flange diameter	164.9 mm
9	Cover diameter	202.9 mm
10	Cable diameter	7.9 mm (max.)
11	Housing bottom width	125.3 mm



Pos.	Description	Values
12	Diameter of mounting bolt holes (2x)	Ø 10.8 mm
13	Diameter of pilot holes (2x)	Ø 12 mm
14	Mounting hole centre line	184 mm



Accessories

- 8" shallow base
- Shallow base installation jig for 8" and 12"

Packing Data

Variant	Dimensions (L x W x H) in mm	Gross weight in kg	Net weight in kg
8" CEDD® Inset Fixture	285 x 285 x 200	4.2	3.7
8" Shallow Base	215 x 215 x 130	2.7	2.5

Ordering code CEDD® TXO

Option	Key	Description	TXO	-	O	-	I	-	3	1	-	Y	00	0	00	-	1	-	00	-	0	0	0	0
Version	TXO	Omnidirectional Inset Light																						
Direction	O	Omni																						
Regulation	I	ICAO																						
Light Intensity	1	CAT I																						
	2	CAT II																						
	3	CAT III																						
Cover/Size	1	8 Inch Cover																						
Color A	B	Blue																						
	R	Red																						
	W	White																						
	Y	Yellow																						
Toe-in A	00	No Toe-In																						
Color B	0	Blank																						
Toe-in B	00	No Toe-In																						
Prism	1	Borosilicate Prism																						
Cable	00	Not applicable (CEDD® technology)																						
Plug type	0	CEDD® inductive clamp																						
Fail-open	0	Functionality via CEDD® monitoring technology																						
Deicing-Kit	0	Not applicable																						
Special options	0	No Special Options																						



Document Information

Name : 04_CEDD_Omnidirectional_Inset_Light_03-70060

Version : V1.2

Language : English (Original)

For the latest version of this document see <https://www.tkh-airportsolutions.com/airfield-products/> or scan:





Company profile:

TKH Airport Solutions is an innovator in airfield ground lighting, offering a complete range of LED AGL products. We build upon the know-how from a long and successful tradition of pioneering developments in the AGL and connectivity industry. Being part of the TKH Group, our company can build on a history of more than 90 years in smart connectivity, energy distribution and AGL.

More information:

TKH Airport Solutions
sales@tkh-airportsolutions.com
www.tkh-airportsolutions.com
+31 (0)53 57 414 56

Visiting address:

Elektrostraat 17
7483 PG Haaksbergen
The Netherlands